

# Diffusion Modeling in BrainSuite13

Justin P. Haldar

# Outline

---

- Introduction
- Diffusion in BrainSuite13
  - Diffusion Modeling
  - Tracking
  - Analysis
- Other Resources
- Conclusion

# Motivation

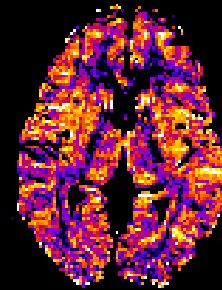
- Diffusion MRI provides unique insight into tissue microstructure
  - Quantitative measures



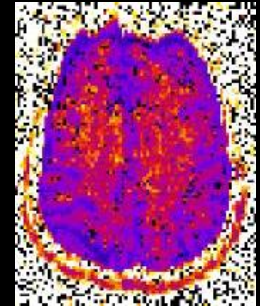
Apparent  
Diffusion  
Coefficient



Fractional  
Anisotropy

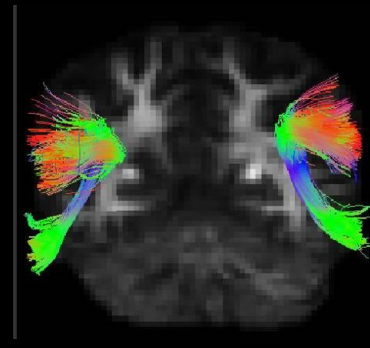
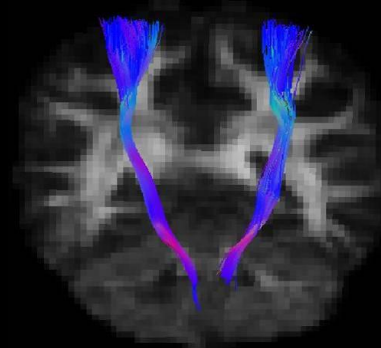
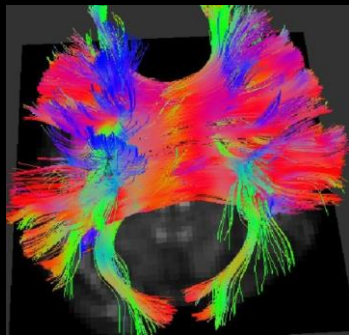


Anomalous  
Exponent



Kurtosis

- Connectivity



# Diffusion Imaging (in general)

## 1. Acquisition

- 6+ Directions
- HARDI
- Multi-Shell
- DSI
- ...

## 2. Preprocessing

- Registration
- Distortion Correction
- Outlier Removal

## 3. Modeling

- DTI
- Multi-DTI
- ODF
  - FRT
  - FRACT
  - Nonlinear Methods
- DKI, CHARMED, ...

## 4. Tracking

- Deterministic
- Probabilistic

## 5. Analysis

- Visualization
- Connectivity Analysis
- ROI Analysis

# Diffusion Imaging (in BrainSuite13)

## 1. Acquisition

- 6+ Directions
- HARDI
- Multi-Shell
- DSI
- ...

## 2. Preprocessing

- Registration
- Distortion Correction
- Outlier Removal

## 3. Modeling

- DTI
- Multi-DTI
- ODF
  - FRT
  - FRACT
  - Nonlinear Methods
- DKI, CHARMED, ...

## 4. Tracking

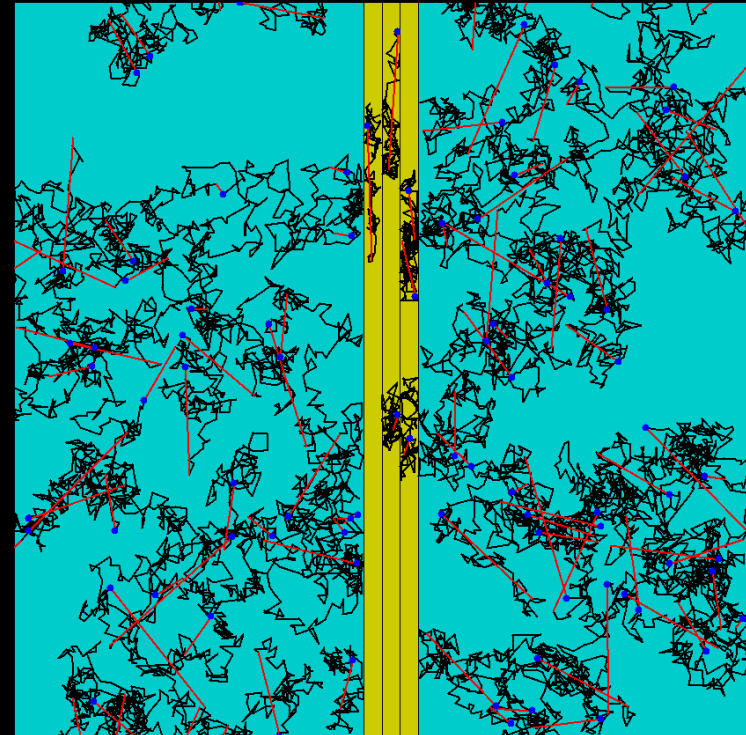
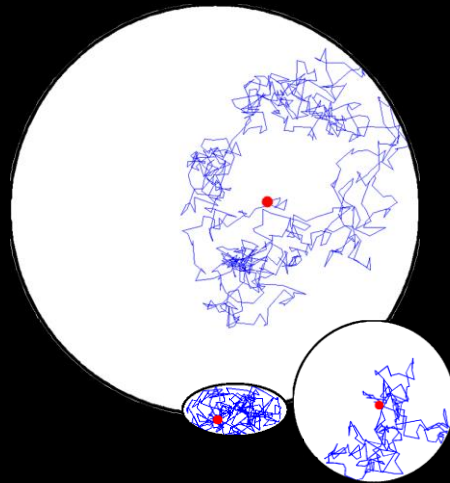
- Deterministic
- Probabilistic

## 5. Analysis

- Visualization
- Connectivity Analysis
- ROI Analysis

# Data Sampling

- Diffusion data is sampled from a 6D space
  - 3D Spatial
    - Where in the brain am I located? (mm scale)
  - 3D Diffusion
    - Where do water molecules typically move? ( $\mu\text{m}$  scale)

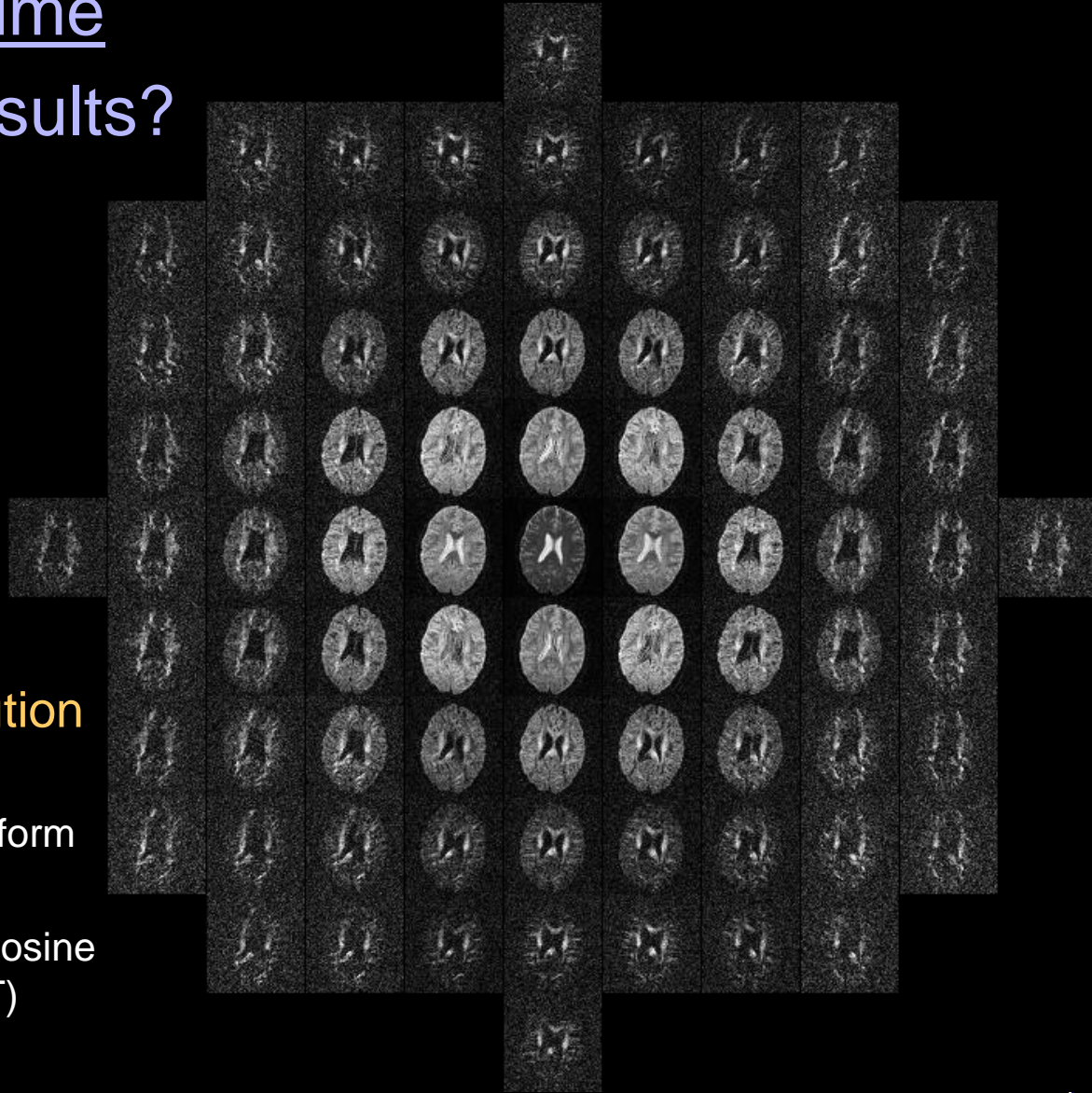


# Diffusion Data is Complicated

- Sampling in 6D = time
- How to interpret results?

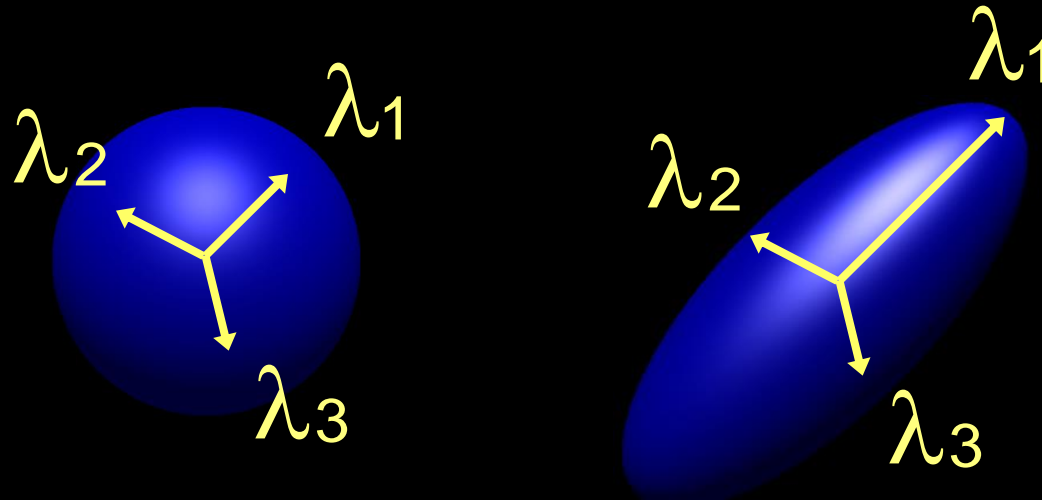
- **Solution:**

- Models!
- In BrainSuite13:
  - Diffusion Tensor Imaging (DTI)
  - Orientation Distribution Functions (ODFs)
    - Funk Radon Transform (FRT)
    - Funk Radon and Cosine Transform (FRACT)



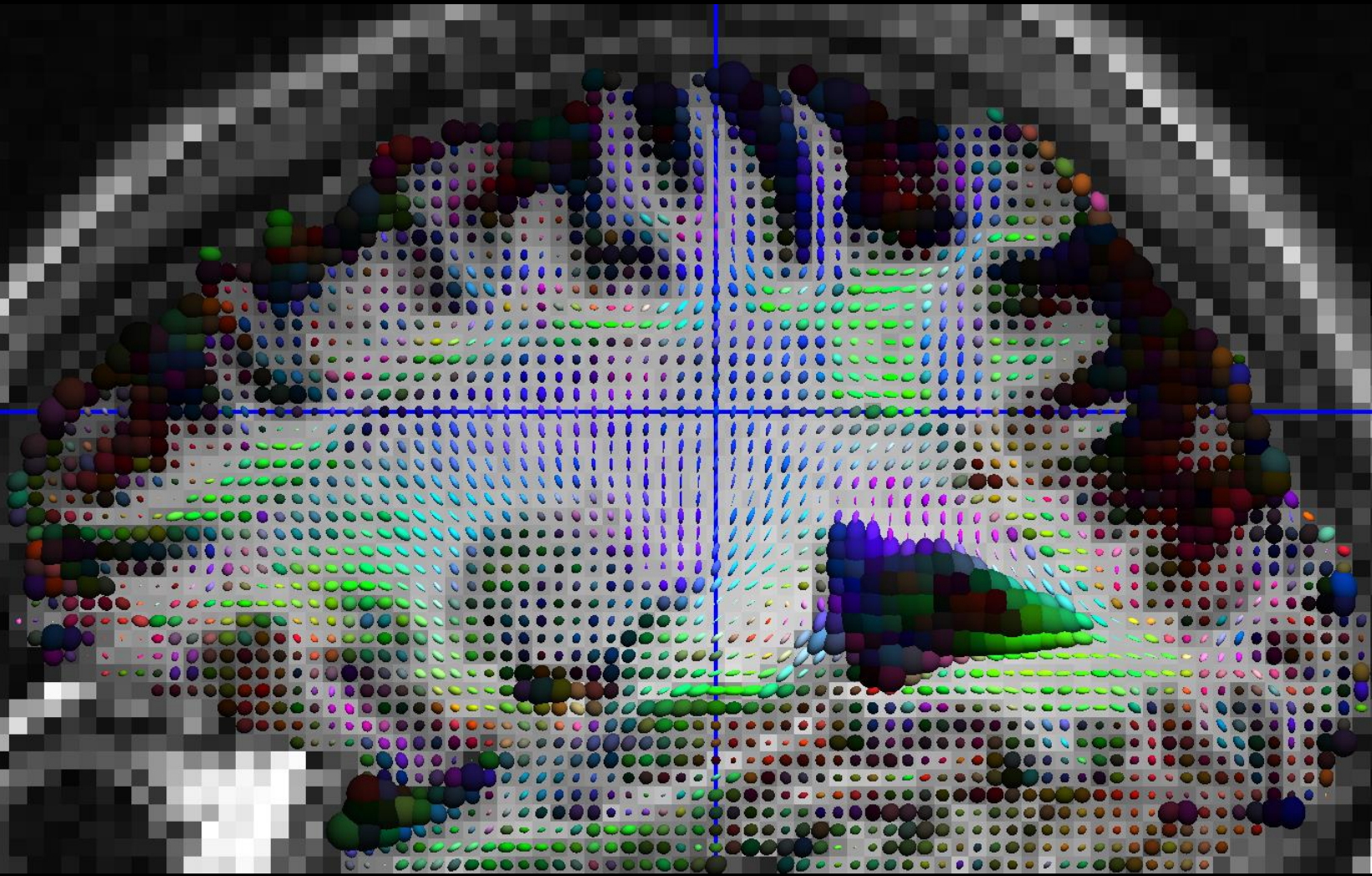
# DTI

- Diffusion Tensor Imaging:
  - A simple model with 7 degrees of freedom
    - 3 orthogonal directions
    - 3 diffusivities along each direction
    - 1 baseline image intensity



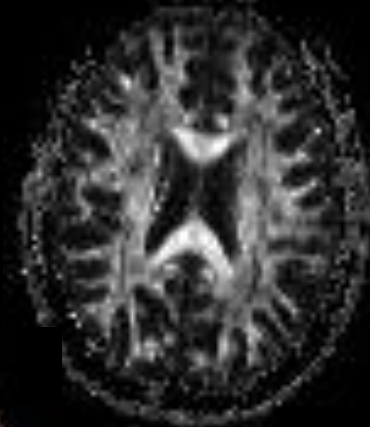
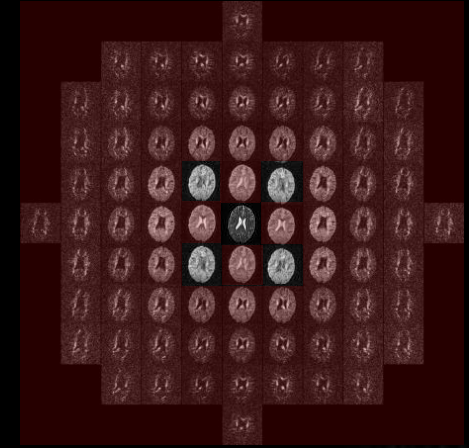


# DTI in BrainSuite13



# Benefits of DTI

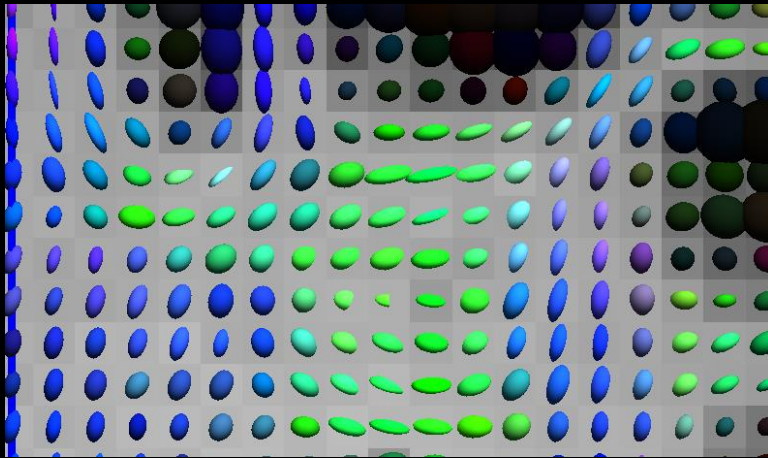
- Only need to sample 7 images
  - In practice ~30 is preferred
  - Sampling is very flexible
- Quantitative information:
  - Mean Diffusivity
    - $(\lambda_1 + \lambda_2 + \lambda_3)/3$
  - Fractional Anisotropy
    - $\frac{\sqrt{3} \sqrt{(\lambda_1 - \bar{\lambda})^2 + (\lambda_2 - \bar{\lambda})^2 + (\lambda_3 - \bar{\lambda})^2}}{\sqrt{\lambda_1^2 + \lambda_2^2 + \lambda_3^2}}$
- Tissue Orientation
  - Enables tracking



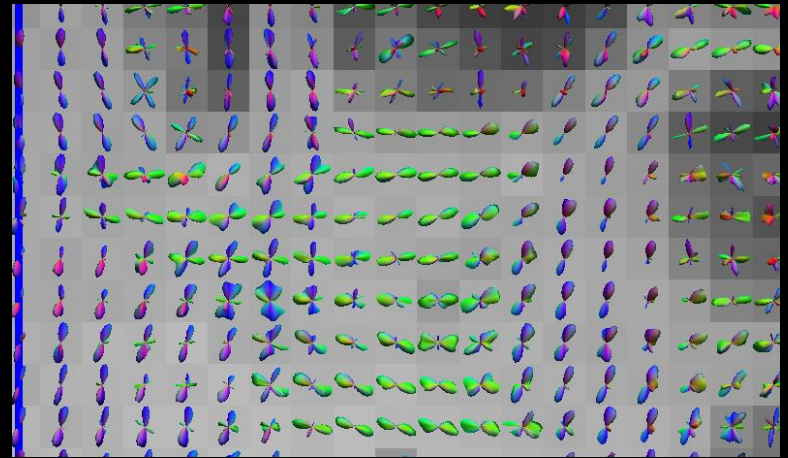


# Limitations of DTI

- Model is almost never valid
  - (But it still provides good biomarkers for microstructure)
- Cannot model multiple orientations in a single voxel



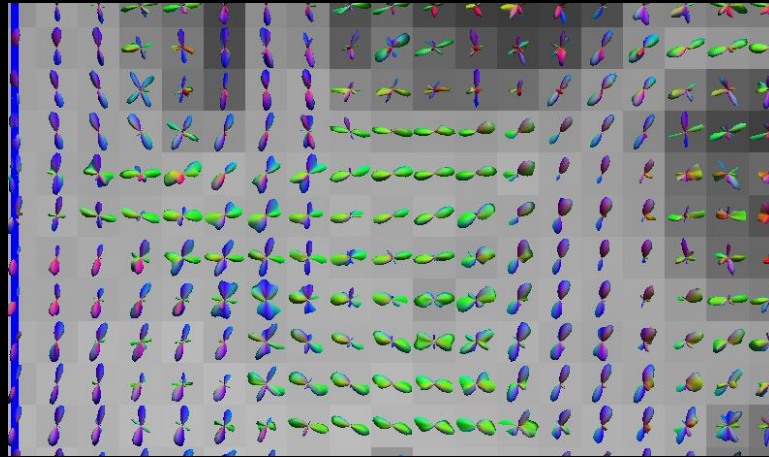
DTI



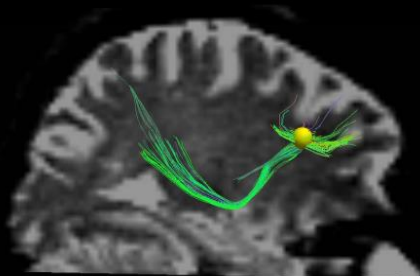
ODFs

# Orientation Distribution Functions

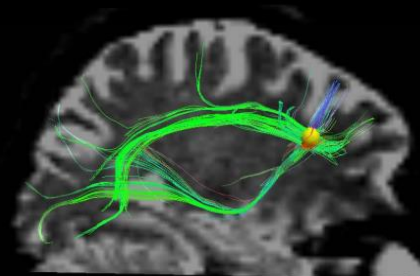
- Give the ability to model multiple orientations in a single voxel



- Enables better tracking in complicated regions with multiple fiber crossings



DTI

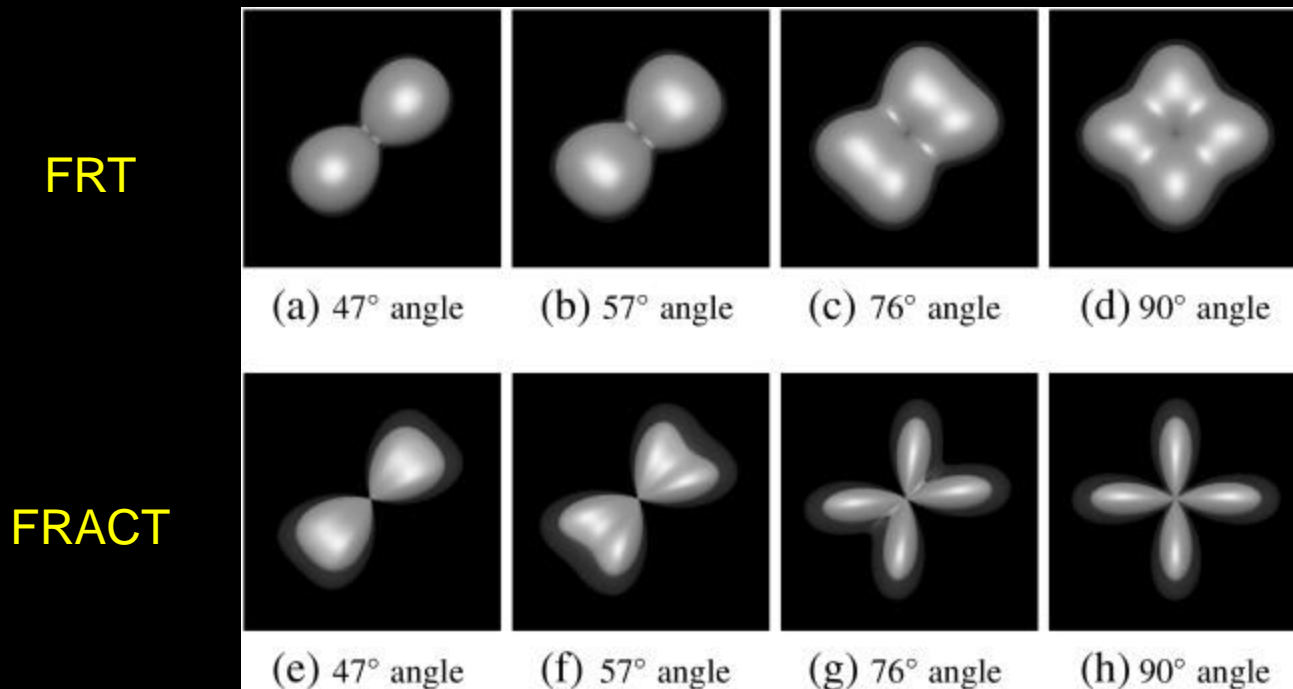


ODF

# FRT vs. FRACT

- BrainSuite13 Provides two ODF methods:

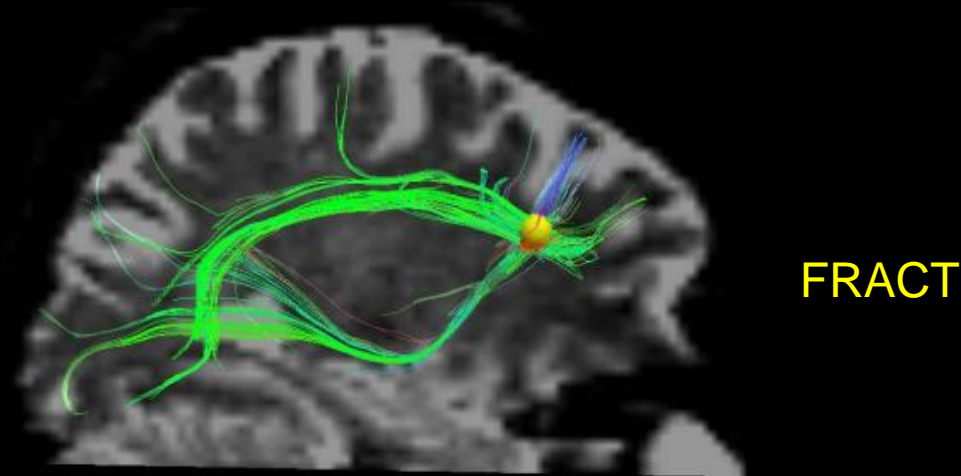
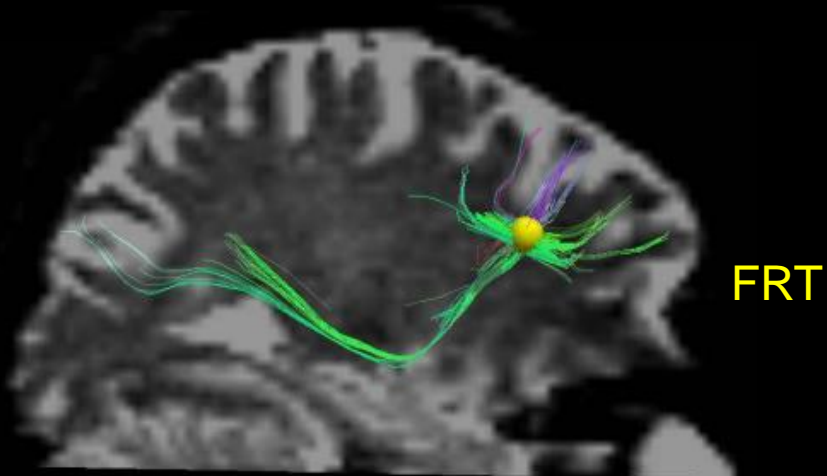
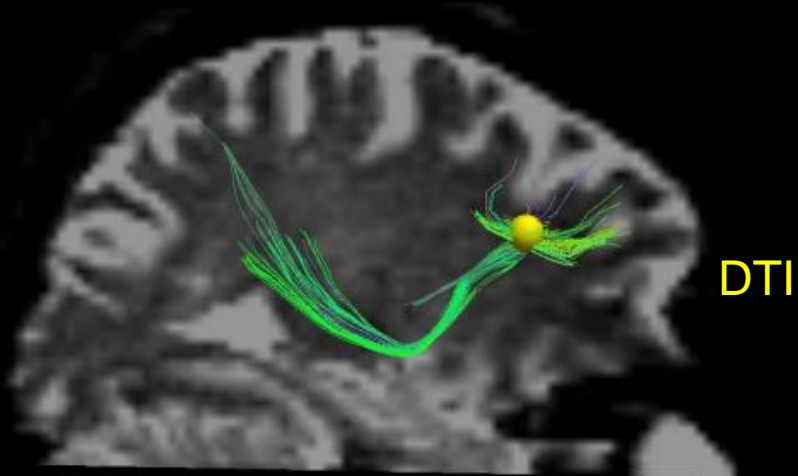
- Funk Radon Transform [1]
  - Most prevalent ODF method in other software
- Funk Radon and Cosine Transform [2]
  - Higher angular resolution



[1] Tuch, *Magn Reson Med* 52:1358-1372, 2004.

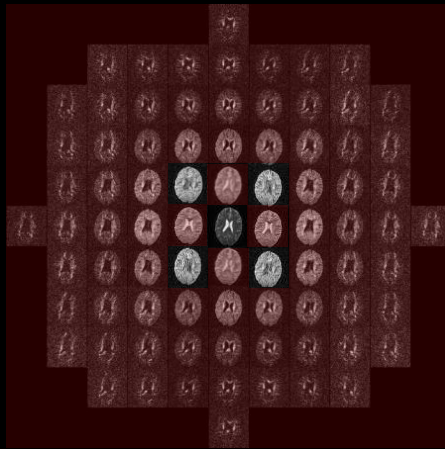
[2] Haldar and Leahy, *NeuroImage* 71:233-247, 2013.

# DTI vs FRT vs FRACT

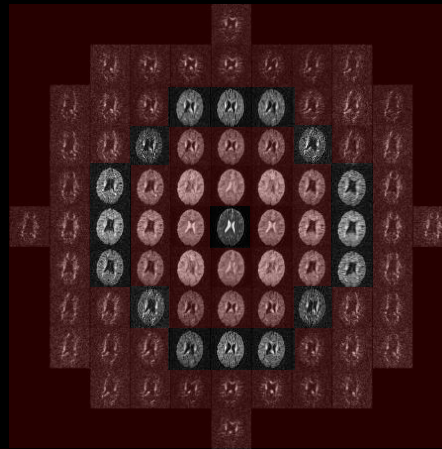


# Limitations of FRT+FRAC

- Requires more data than DTI
  - 64+ directions recommended (often more is needed)
- Works only for data on the sphere
  - better with high b-value data
- More sensitive to noise than DTI



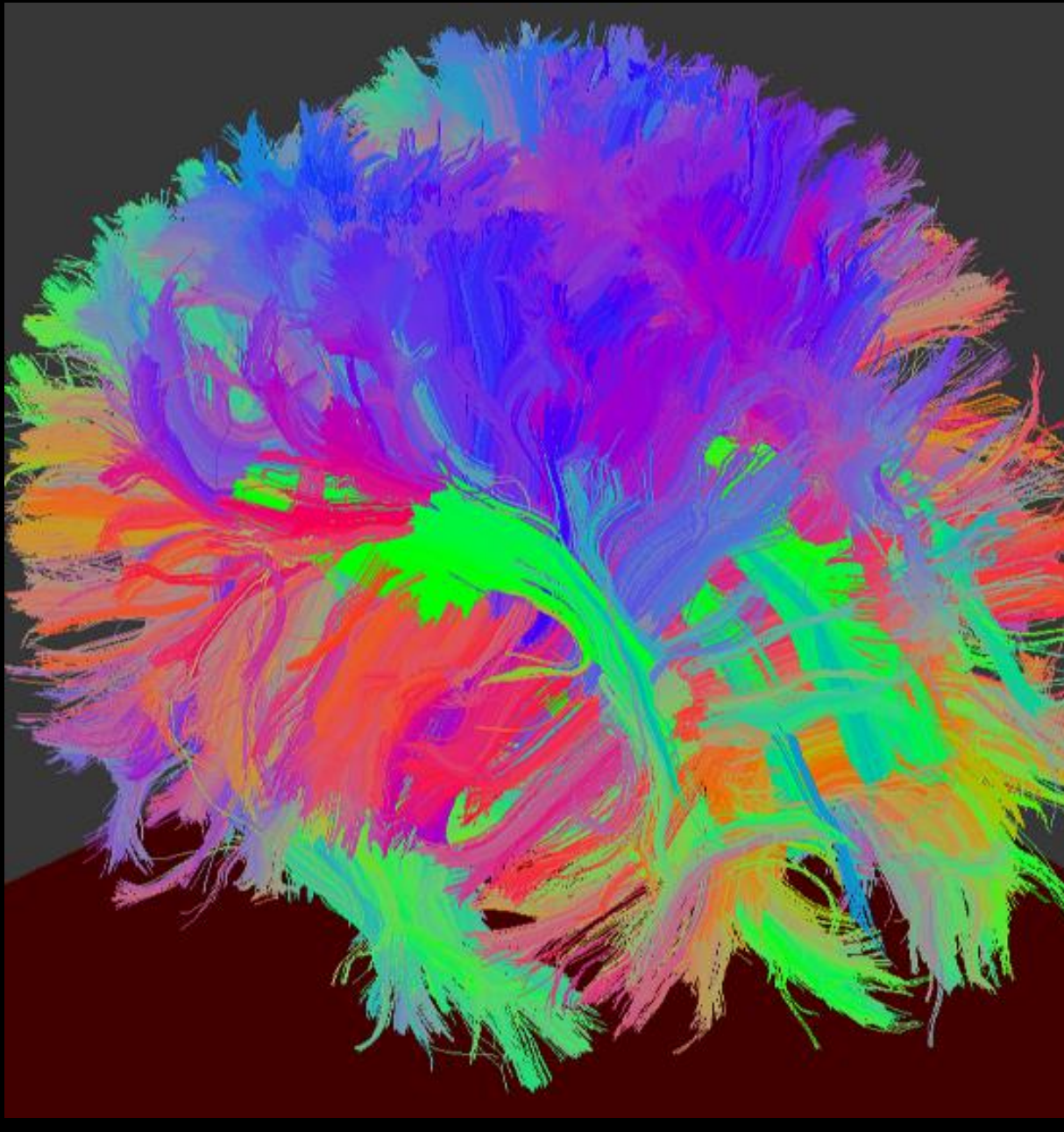
DTI



ODF



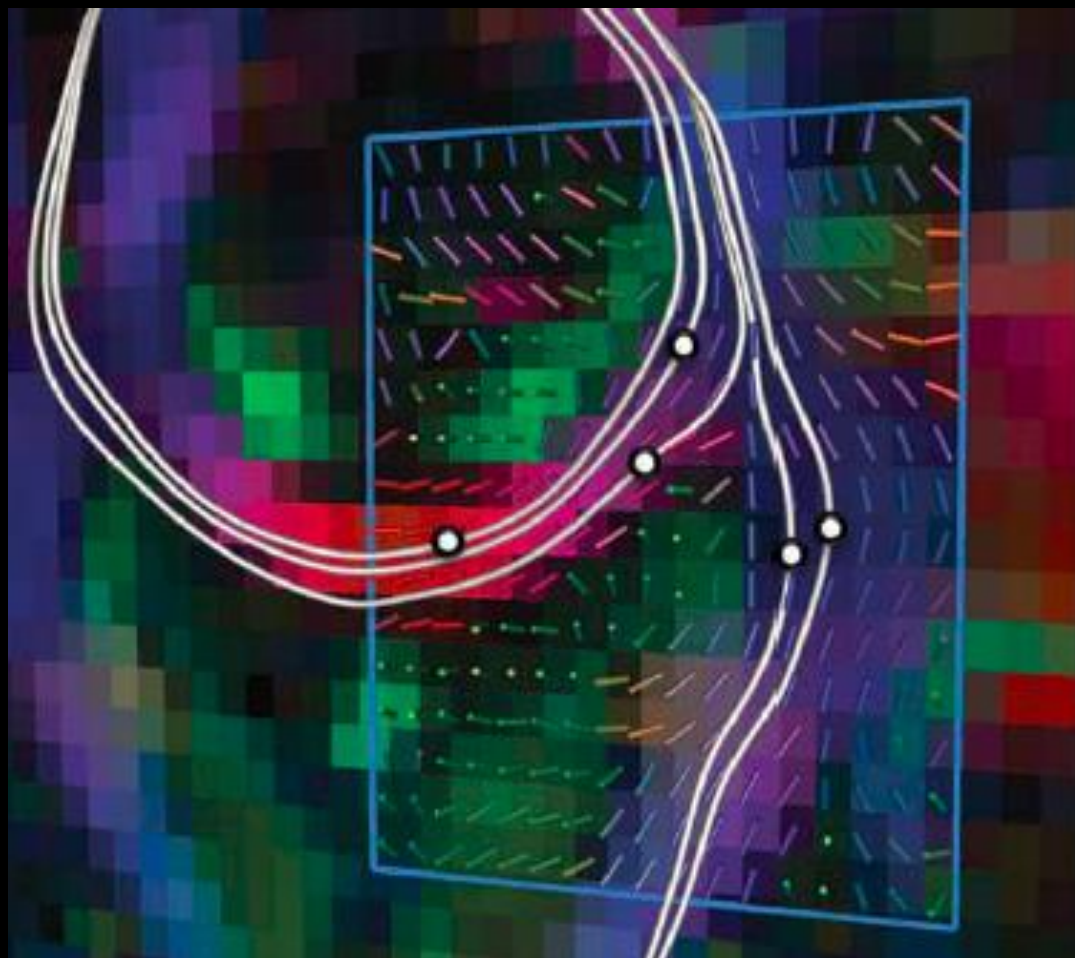
# Tracking





# Deterministic Tractography

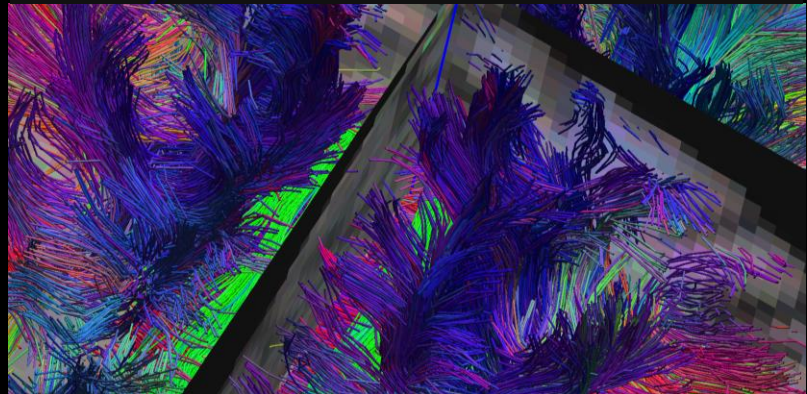
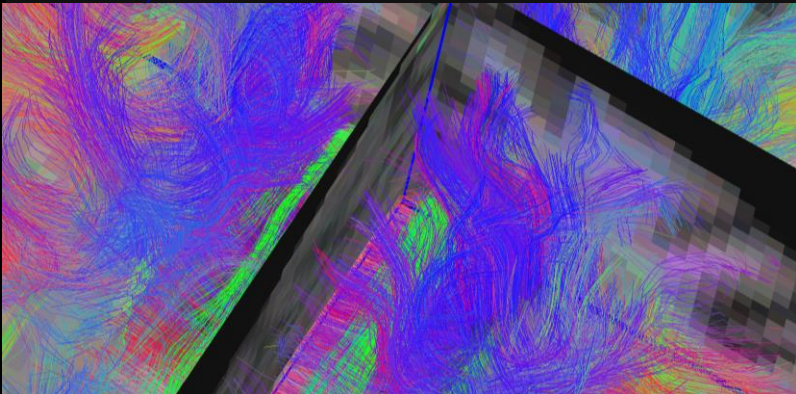
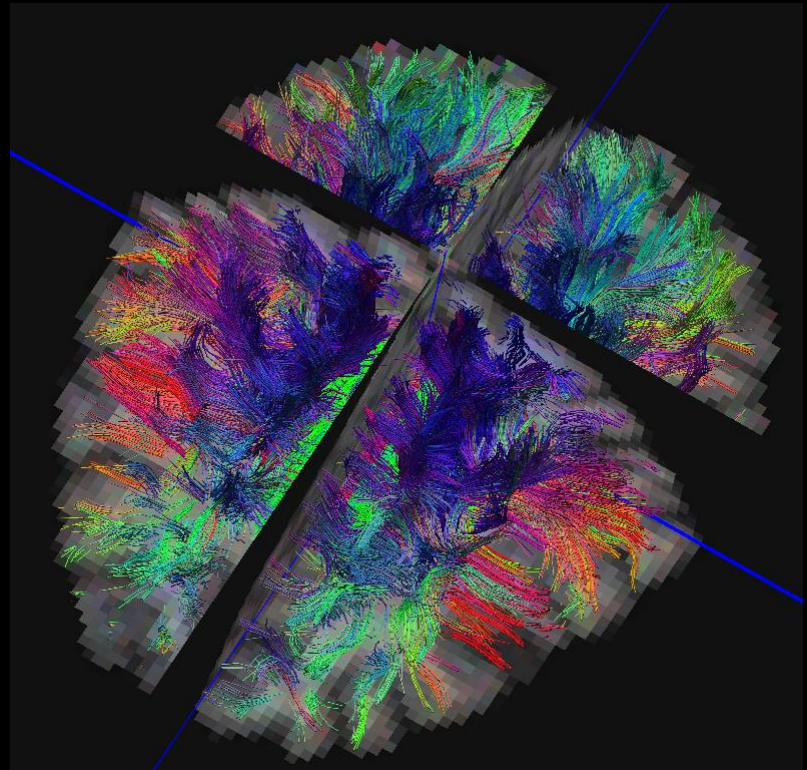
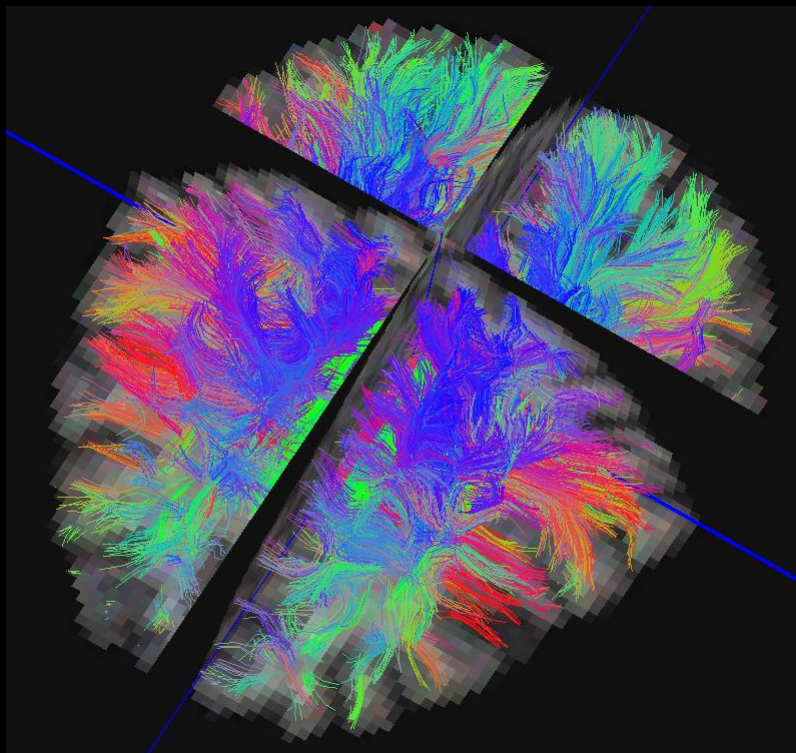
- Start at seed locations
  - 'Tract Seeding'
- Follow major orientations
  - 'ODF sampling'
  - 'Stepsize'
- Know when to stop
  - 'Threshold' parameters



Tract Seeding	<input type="text" value="1"/>	seeds/voxel
Stepsize	<input type="text" value="0.25"/>	in mm
Max # of steps	<input type="text" value="500"/>	
Angle Threshold	<input type="text" value="0.99"/>	[0,1)
FA Threshold	<input type="text" value="0.05"/>	[0,1]
ODF Sampling	<input type="text" value="20"/>	
GFA/l2 Threshold	<input type="text" value="0.01"/>	

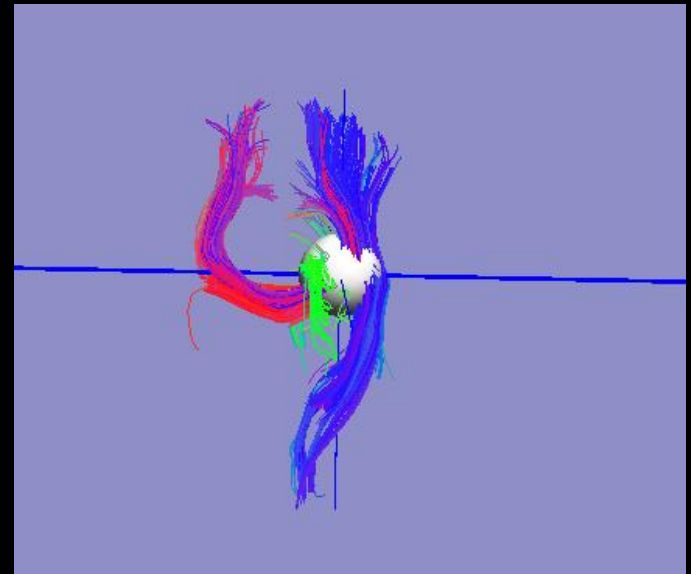
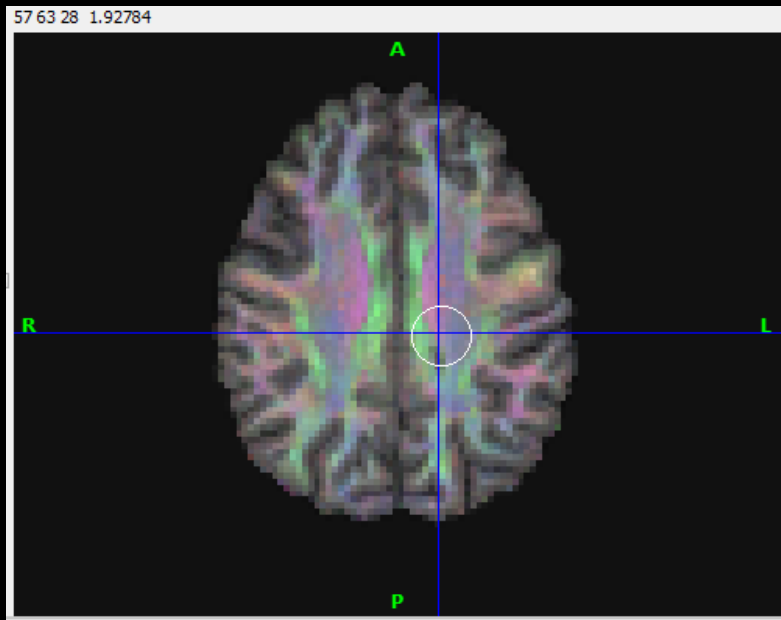
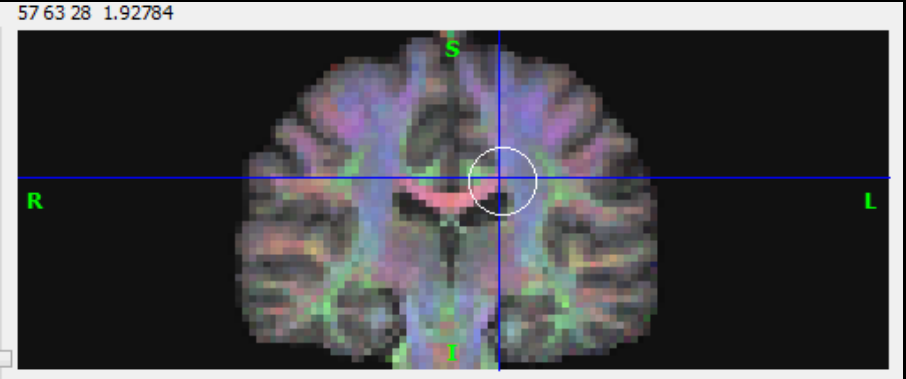
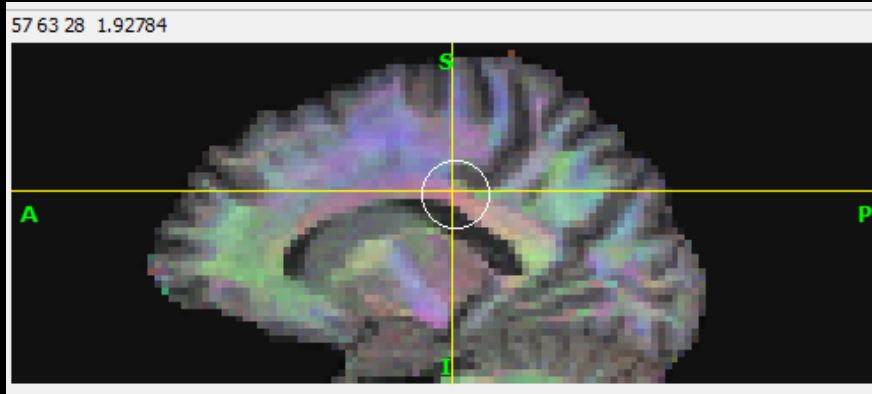
Tournier 2011

# Render as Tubes





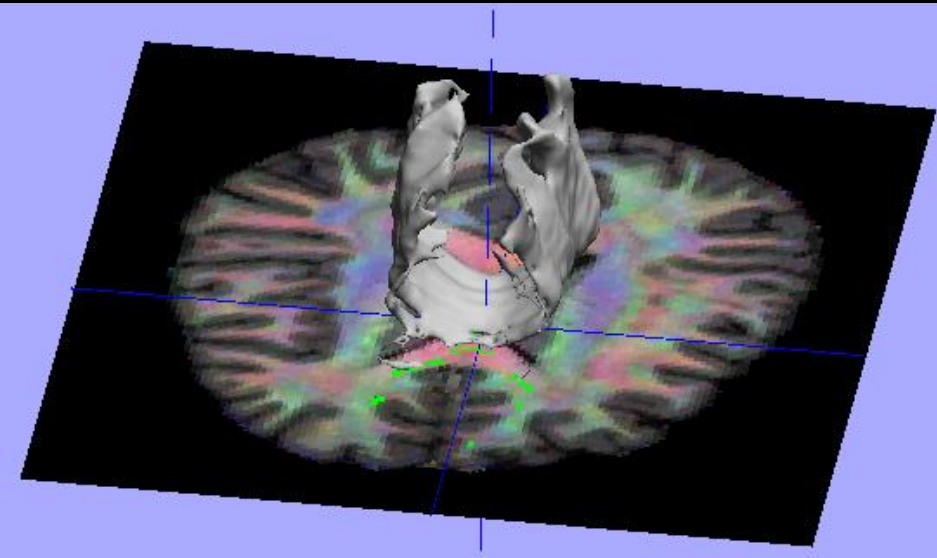
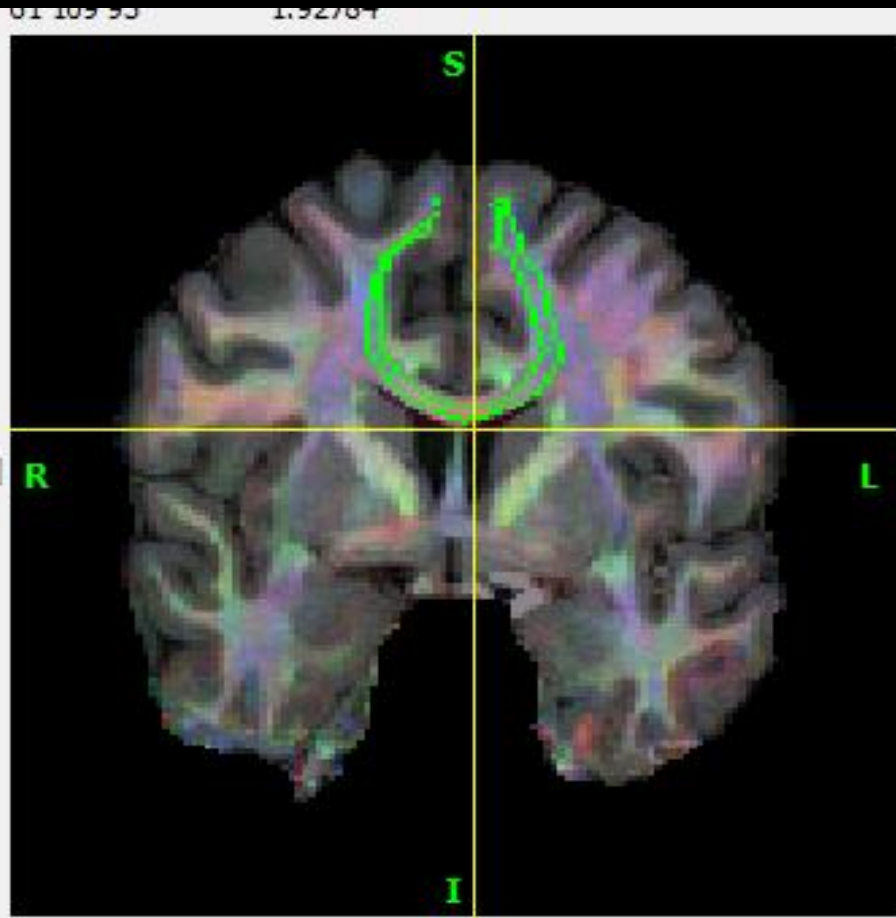
# Sphere Filtering





# Track-Based ROI Tool

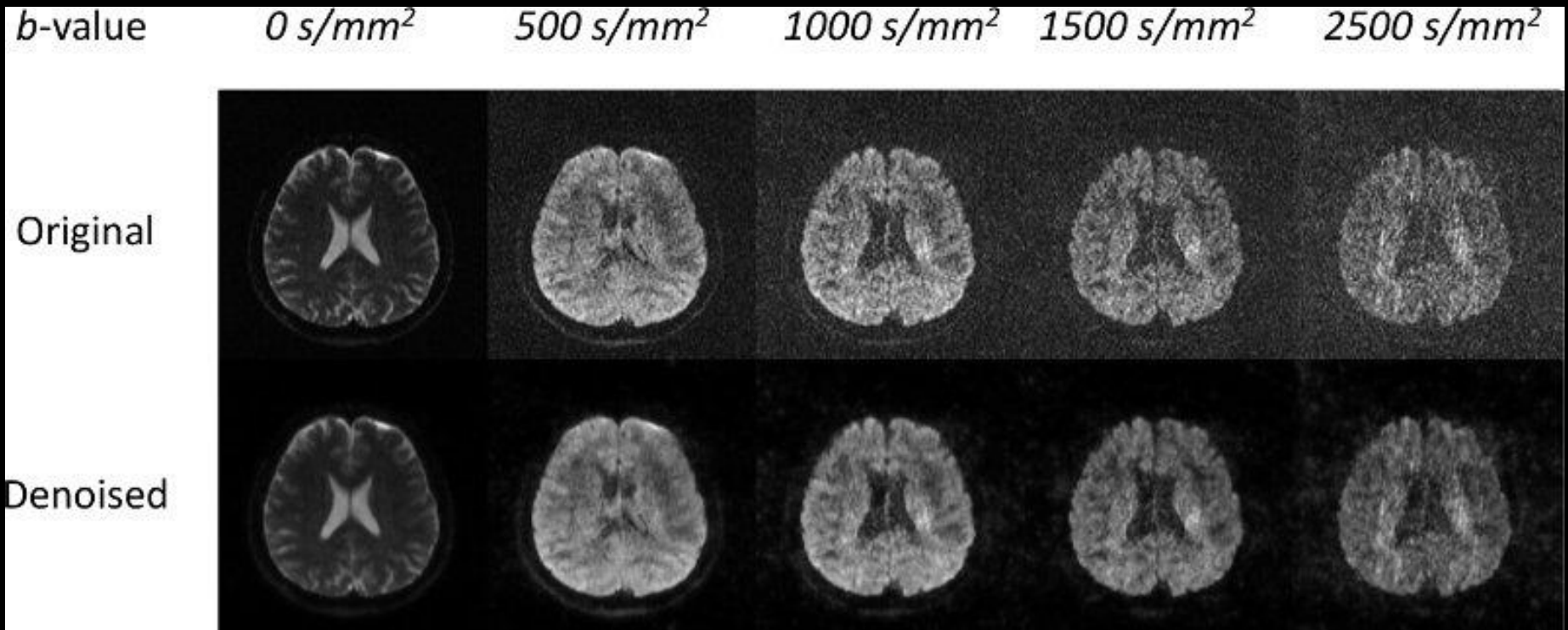
- Select voxels based on tracks



- To be released soon – contact us for more info



# Denoising

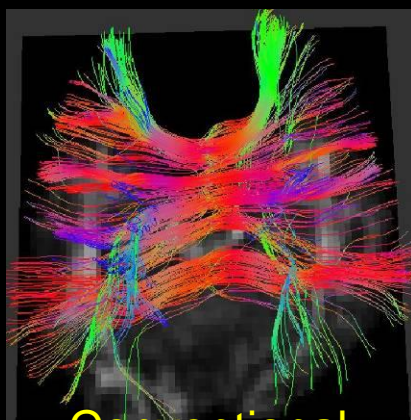


[1] Haldar, Wedeen, Nezamzadeh, Dai, Weiner, Schuff, Liang, *Magn Reson Med* 69:277-289, 2013.

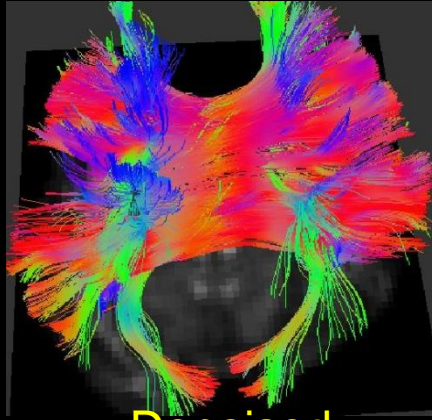
[2] Varadarajan and Haldar, *IEEE ISBI*, 2013, pp. 708-711.

<http://mr.usc.edu/download/joint-denoising-for-diffusion-mri-magnitude-images>

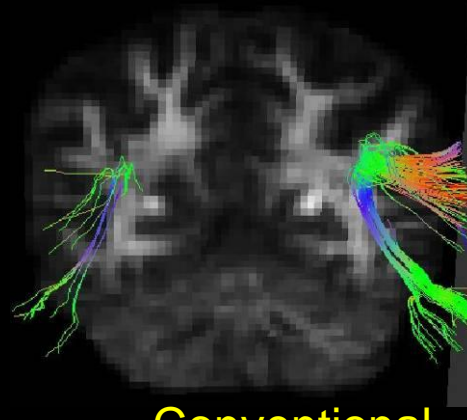
# Denoising



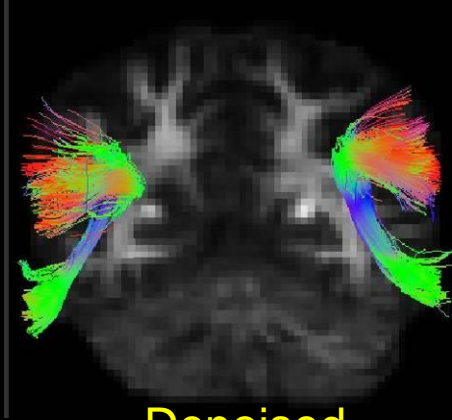
Conventional



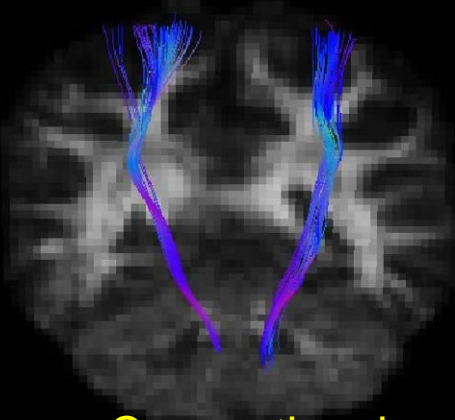
Denoised



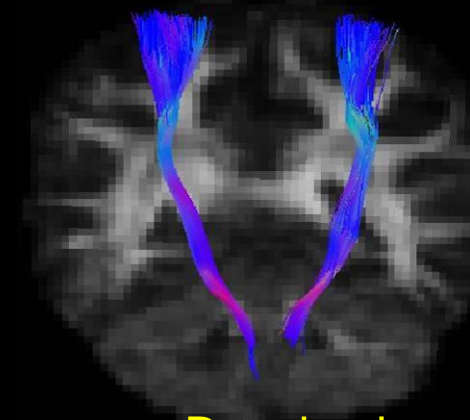
Conventional



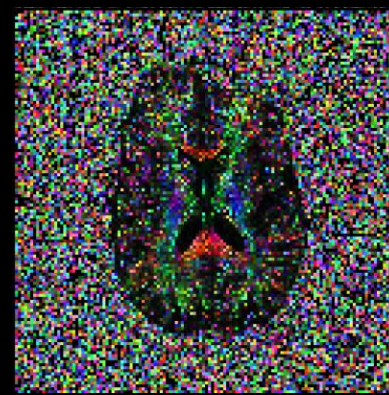
Denoised



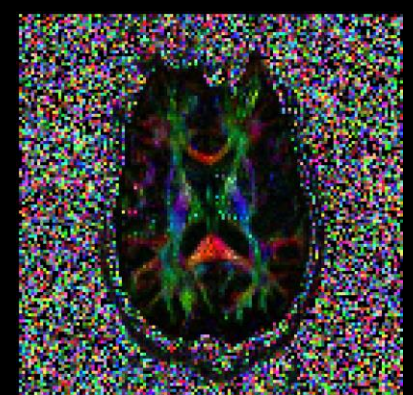
Conventional



Denoised



Conventional



Denoised

<http://mr.usc.edu/download/joint-denoising-for-diffusion-mri-magnitude-images>

# Biases and Errors

- Make sure you know the limitations of tractography and diffusion MRI before you interpret it

## Twenty-five Pitfalls in the Analysis of Diffusion MRI Data<sup>†</sup>

*NMR Biomed.* 2010; **23**: 803–820

Derek K. Jones<sup>a\*</sup> and Mara Cercignani<sup>b</sup>

Challenges and limitations of quantifying brain connectivity *in vivo* with diffusion MRI

Derek K Jones

*Imaging Med.* (2010) **2**(3), 341–355

White matter integrity, fiber count, and other fallacies: The do's and don'ts of diffusion MRI

*NeuroImage* 73 (2013) 239–254

Derek K. Jones<sup>a,b,\*</sup>, Thomas R. Knösche<sup>c</sup>, Robert Turner<sup>c</sup>



# Overview

## 1. Acquisition

- 6+ Directions
- HARDI
- Multi-Shell
- DSI
- ...

## 2. Preprocessing

- Registration
- Distortion Correction
- Outlier Removal

## 3. Modeling

- DTI
- Multi-DTI
- ODF
  - FRT
  - FRACT
  - Nonlinear Methods
- DKI, CHARMED, ...

## 4. Tracking

- Deterministic
- Probabilistic

## 5. Analysis

- Visualization
- Connectivity Analysis
- ROI Analysis