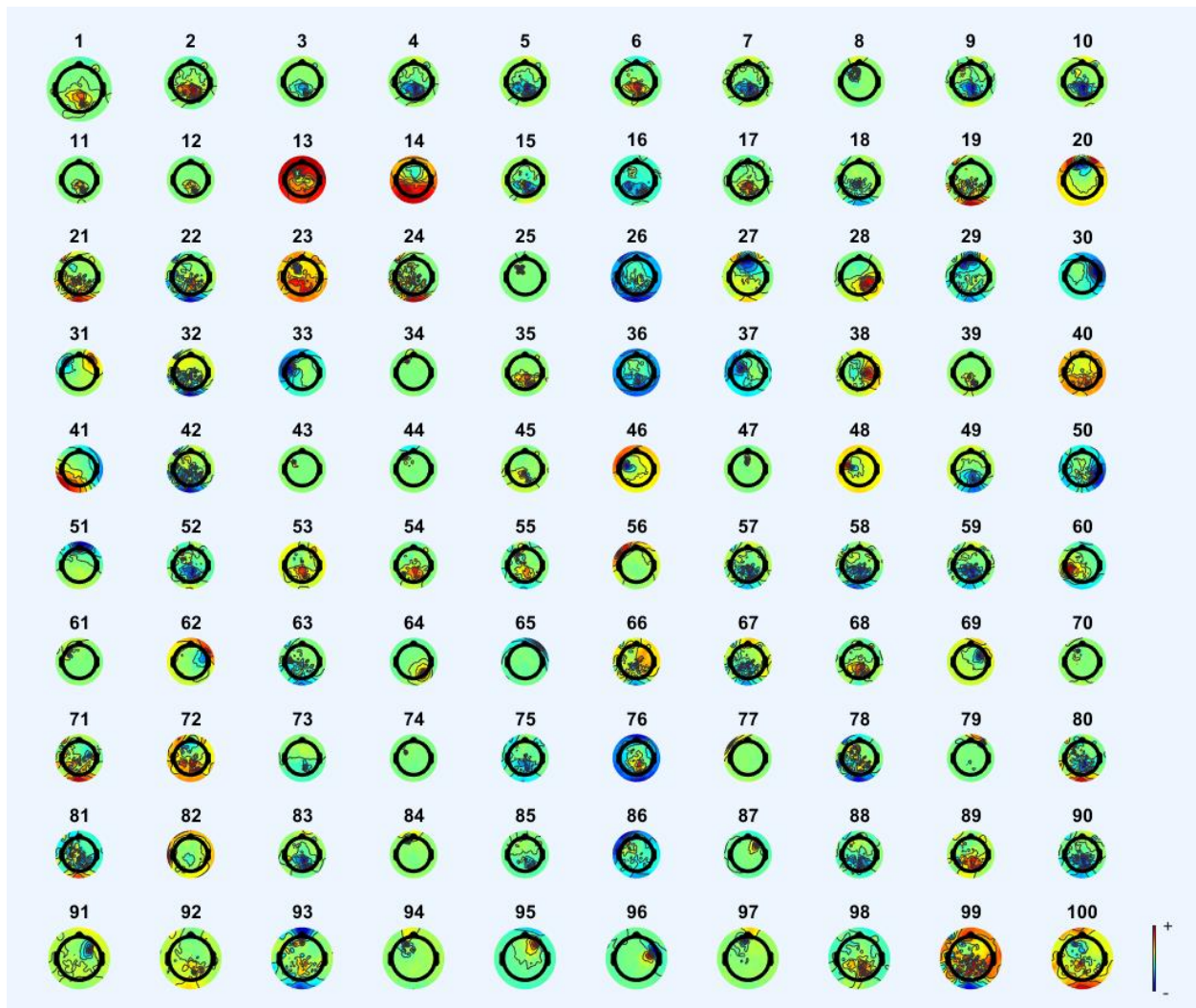
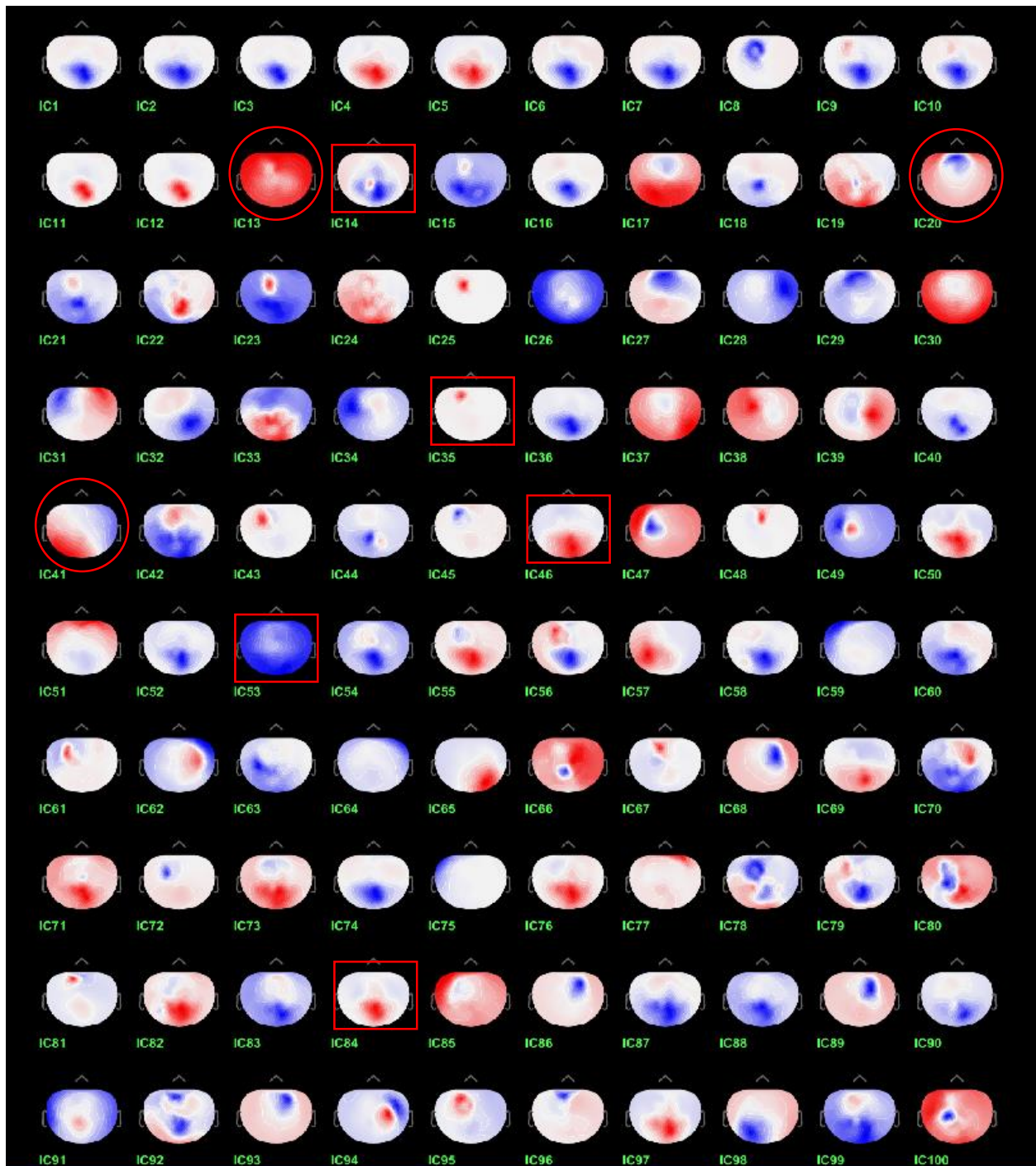


Topography plot in EEGLAB for first 100 components out of 240.



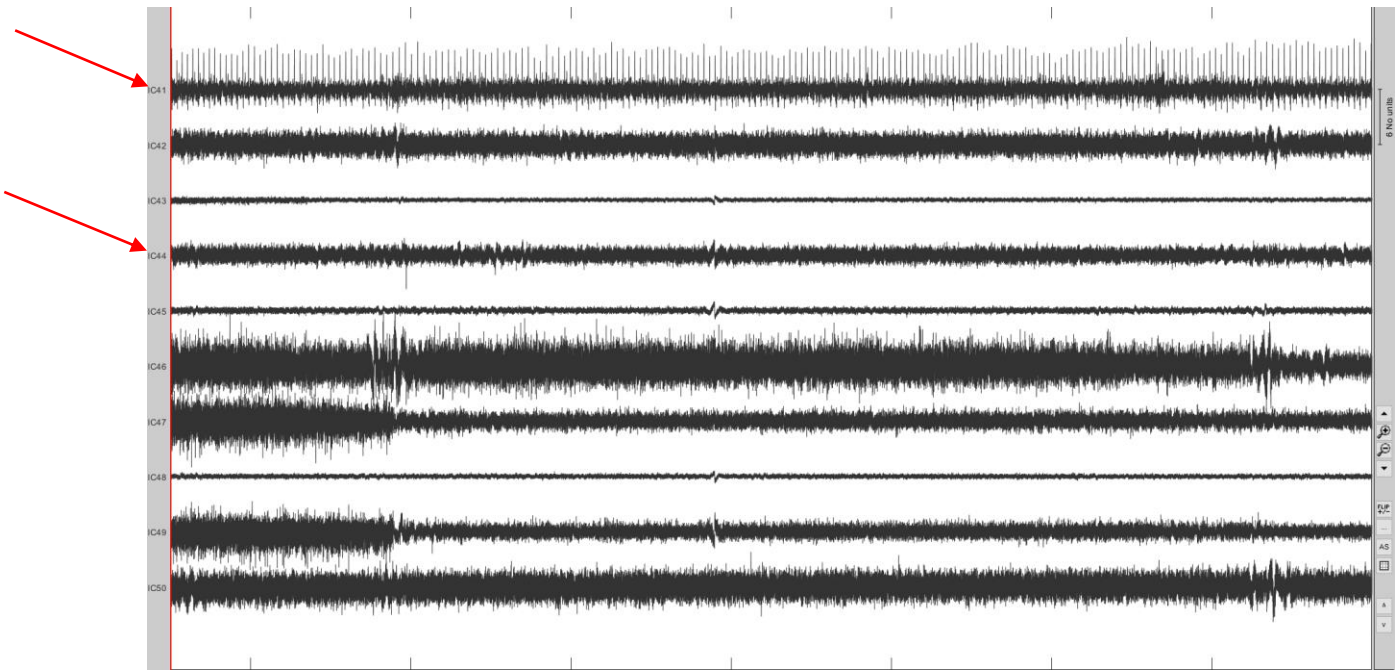
Topography plot in BRAINSTORM for first 100 components out of 240.



Red rectangles: examples of some topography plots in BRAINSTORM which are different from their corresponding in EEGLAB.

Red circles: examples of some topography plots in BRAINSTORM which are the same with their corresponding in EEGLAB.

Time series of ICA components (IC41-IC50) in brainstorm for time window 50s-150s.



Time series of ICA components (IC41-IC50) in EEGLAB for time window 50s-150s.

